

# Congratulations, Trappist South!



FLI ProLine at Trappist South,  
La Silla Observatory, Chile

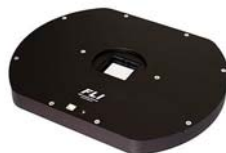


Exo-planet discoveries made at ESO's Trappist South Observatory used an FLI ProLine camera with a back-illuminated 2K x 2K CCD.

Whether your goal is beautiful astrophotography or discovering exo-planets like Trappist South, FLI's wide range of high performance cameras guarantees a good match to your scope. FLI offers interline transfer, front and back-illuminated CCDs, and soon you'll see front and back-illuminated scientific CMOS with as low as 1.3 electrons noise.



MicroLine ML50100



CenterLine Filter Wheel



Atlas Focuser

At FLI, we design and build unrivaled cameras, filter wheels, and focusers so you can spend more time imaging, and less time fixing your images.